



5 Hertford College, Graduate Centre, Folly Bridge, Oxford, OX1 4JS

SECOND FLOOR 2 BED APARTMENT just off Folly Bridge, Oxford

Views: Stunning dual-aspect river views over the Thames

Living Space: Open plan lounge/kitchen/diner with ample natural light

Kitchen Includes: Fridge/freezer, cooker, washer/dryer

Bedrooms:

1 spacious double bedroom

1 single bedroom or study

Bathroom: Fully fitted with shower over bath

Parking: No parking available

Council Tax: Band C

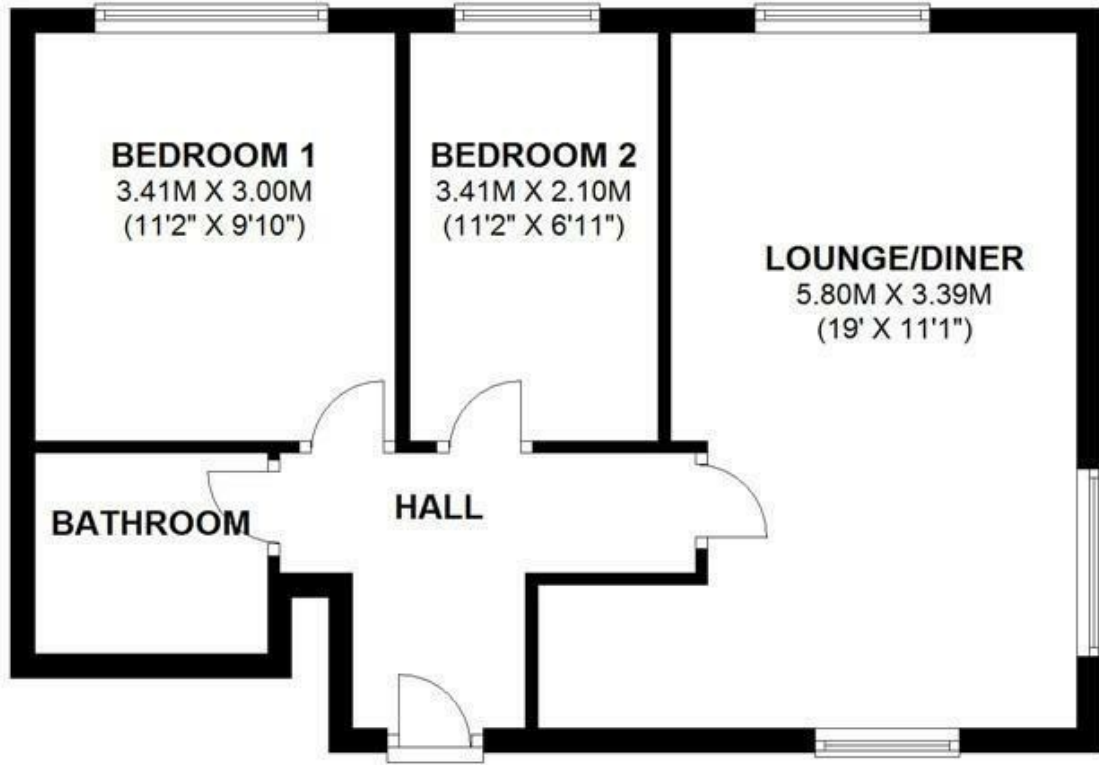
A modern and well-presented two-bedroom apartment situated just off Folly Bridge with breathtaking views of the River Thames. This second-floor property features an open plan living space with a fully equipped kitchen, a good-sized double bedroom, a single bedroom or home office, and a stylish bathroom. Ideal for professionals seeking riverside living in a central Oxford location. Please note, parking is not available.

- 2 Bedrooms
- 2 Receptions
- 1 Bathroom
- Folly Bridge, Abingdon Road
- Furnished Property
- Flat (no parking)

£1,800 PCM

SECOND FLOOR

APPROX. 48.3 SQ. METRES (519.6 SQ. FEET)



TOTAL AREA: APPROX. 48.3 SQ. METRES (519.6 SQ. FEET)

Energy Efficiency Rating		Current	Potential
Very energy efficient - lower running costs			
(92 plus) A			
(81-91) B			
(69-80) C			
(55-68) D			
(39-54) E			
(21-38) F			
(1-20) G			
Not energy efficient - higher running costs			
		76	76
England & Wales	EU Directive 2002/91/EC		

Environmental Impact (CO ₂) Rating		Current	Potential
Very environmentally friendly - lower CO ₂ emissions			
(92 plus) A			
(81-91) B			
(69-80) C			
(55-68) D			
(39-54) E			
(21-38) F			
(1-20) G			
Not environmentally friendly - higher CO ₂ emissions			
		76	76
England & Wales	EU Directive 2002/91/EC		